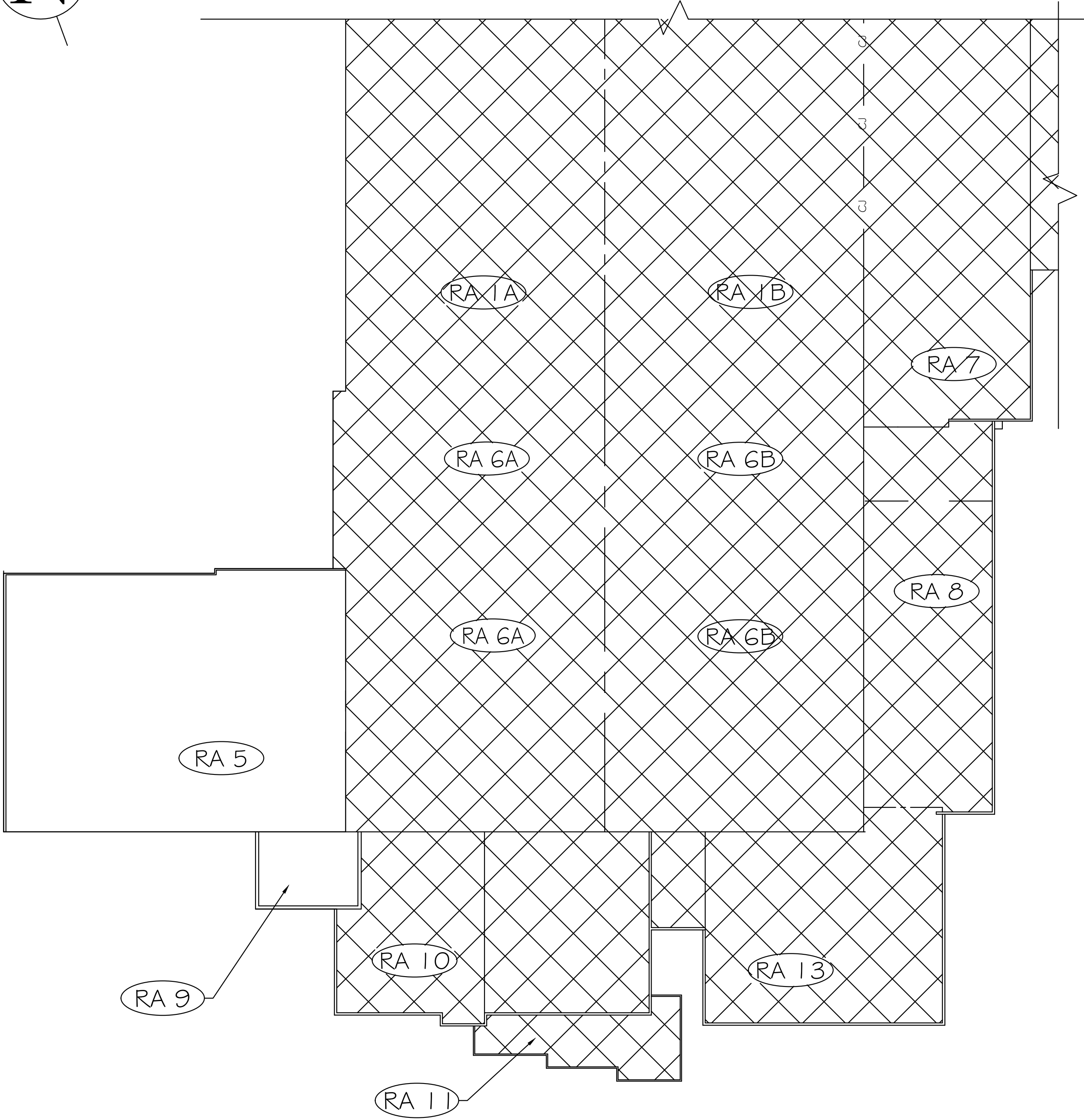
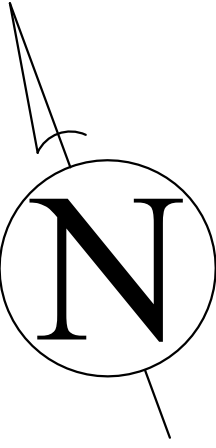


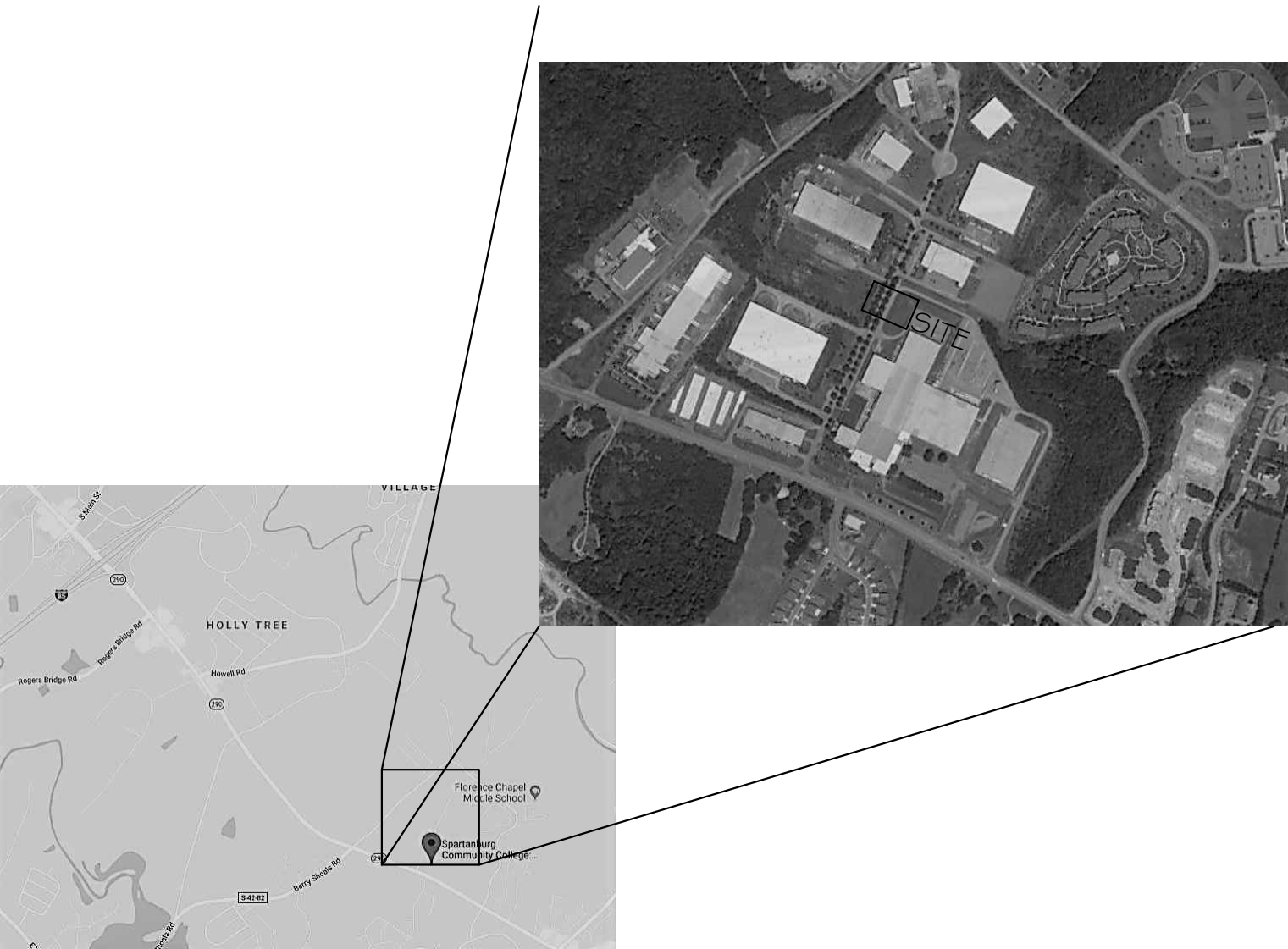
SPARTANBURG COMMUNITY COLLEGE - TYGER RIVER CAMPUS - ACADEMIC WING
RECOVER ROOFING PROJECT
1875 EAST MAIN STREET
DUNCAN, SC 29334

BUILDING CODE ANALYSIS (FORM F3)	
PROJECT: SCC- TRB 'Academic Area Roof Recover Project Duncan, South Carolina 29334 SUBMITTAL: [] SCHEMATIC [] DESIGN DEVELOPMENT [X] CONSTRUCTION DOCUMENT DATE: 5/5/25 CODE # EDITION: 2018 INTERNATIONAL EXISTING BUILDING CODE (WITH SC AMENDMENTS) # 2009 IECC	
BASIC BUILDING CODE INFORMATION	
	ROOF AREAS 1A # 2
CONSTRUCTION CLASSIFICATION TYPE (IBC 602)	TYPE II-B
OCCUPANCY GROUP (indicate all) (IBC 302) (Note IBC 506.5)	F-1 FACTORY S-1 STORAGE B BUSINESS A-3 ASSEMBLY (ACCESSORY)
OCCUPANCY GROUP (indicate most restrictive) (IBC Table 503)	FACTORY
Does building require Incidental Use Area Separation? (IBC 508.2.5)	[X] no [] yes
Does building have Accessory Occupancy (ies)? What percent of story is accessory occupancy? (IBC 508.2)	[] no [X] yes 5,982 SF 1.65 %
Mixed Occupancy (IBC 508)	[] no [X] yes
Non separated (IBC 508.3)	[] no [X] yes
Separated (IBC 508.4) (IBC 506.5)	[X] no [] yes
OTHER FIRE PROTECTION SYSTEMS, DEVICES or FEATURES If the building has any special or notable fire protection or safety feature or hazard the designers should list them here, describe the performance characteristics and refer to locations in construction documents. (e.g. fire extinguishers, smoke-evacuation/control/compartments. Note IBC 414.1.3.)	ROOF AREAS 1A # 2 HAVE SPRINKLER PROTECTION THROUGHOUT

PROJECT DATA
A. PROJECT DESIGNED IN ACCORDANCE WITH: 1. INTERNATIONAL EXISTING BUILDING CODE - 2018 EDITION (WITH SC AMENDMENTS) 2. INTERNATIONAL PLUMBING CODE - 2018 EDITION 3. INTERNATIONAL FIRE CODE - 2018 EDITION 4. INTERNATIONAL BUILDING CODE - 2018 EDITION 5. INTERNATIONAL ENERGY CONSERVATION CODE - 2009 EDITION 6. NATIONAL FIRE PROTECTION ASSOCIATION 10 - 2013 EDITION
B. BASIC REVIEW INFORMATION 1. EXISTING FACILITY CONSISTS OF: 2. AREA OF AFFECTED ROOF (RA): 16,406 SF a. RA 5 = 15,149 SF b. RA 9 = 1,257 SF 3. ROOF HEIGHT ABOVE GRADE: a. RA 5: 20' b. RA 9: 26' 4. PRIMARY OCCUPANCY CLASS: GROUP "B" BUSINESS 5. CLASS "A" ROOF COVERING 6. FIRE RESISTANCE RATING PER UL #TGFP-R1306
C. PROJECT IN FIRE DISTRICT: YES



DRAWING INDEX	
K I	KEY PLAN, DRAWING INDEX #
	SITE VICINITY MAP
R I	ROOF PLAN
D I	DETAILS



2 SITE VICINITY MAP

LEGEND	
	= BASE BID WORK
	= NOT IN CONTRACT
	= ROOF AREA LABEL

1 SPARTANBURG COMMUNITY COLLEGE - TYGER RIVER KEY PLAN

Shepard & Associates, LLC

146 Leisure Lane, Suite C
Columbia, South Carolina 29210
Phone: (803) 407-8284
Fax: (803) 407-8206

SHEET TITLE: SCC PROJECT NO. H59-N310-JM
KEY PLAN

PROJECT DESCRIPTION:
SCC-TRB ACADEMIC AREA ROOF RECOVER
CLIENT NAME:
SPARTANBURG COMMUNITY COLLEGE

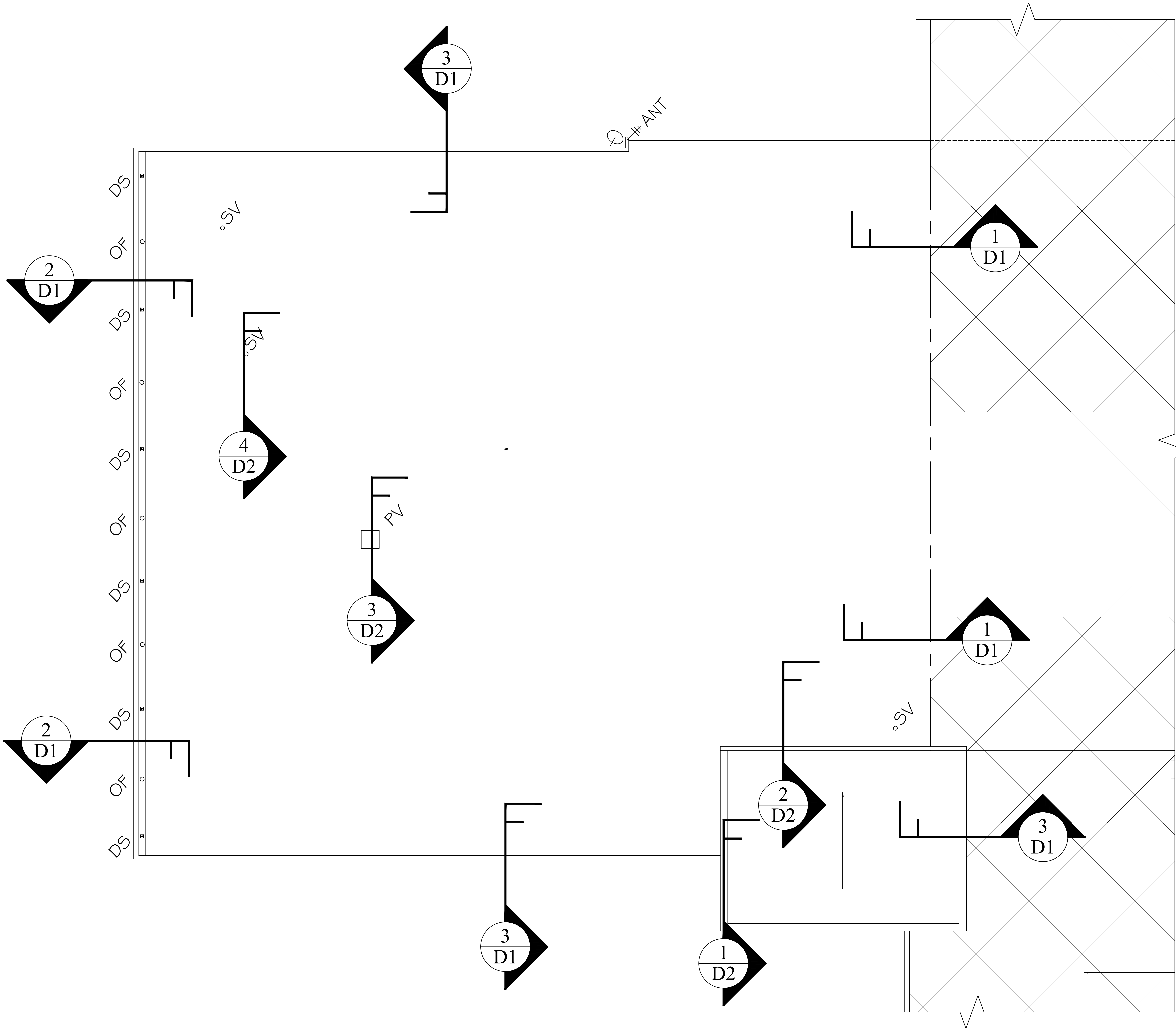
REVISIONS	
REVISION	DATE APPROVED



PF No. 15004.018.004
DATE: 5/5/2025
SCALE: NTS
DRAWN: JAW
CHECKED: RCP

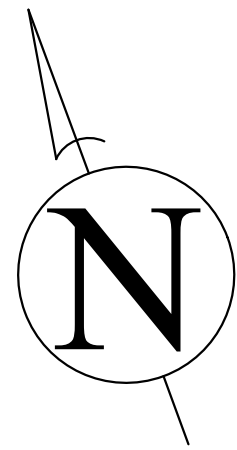
SHEET

K1



LEGEND

- = AREA TO RECOVER
- ▨ = AREA NOT IN CONTRACT
- = SLOPE IN STRUCTURE
- OF = OVERFLOW IN GUTTER
- DS = DOWNSPOUT IN GUTTER
- SV = SANITARY VENT
- PV = POWER VENT



TYGER RIVER CAMPUS - ACADEMIC WING
Roof Areas 5 & 9

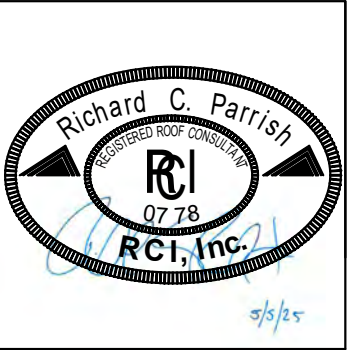
CONSTRUCTION DOCUMENTS

Shepard & Associates, LLC

146 Leisure Lane, Suite C
Columbia, South Carolina 29210
Phone: (803) 407-8284
Fax: (803) 407-8206

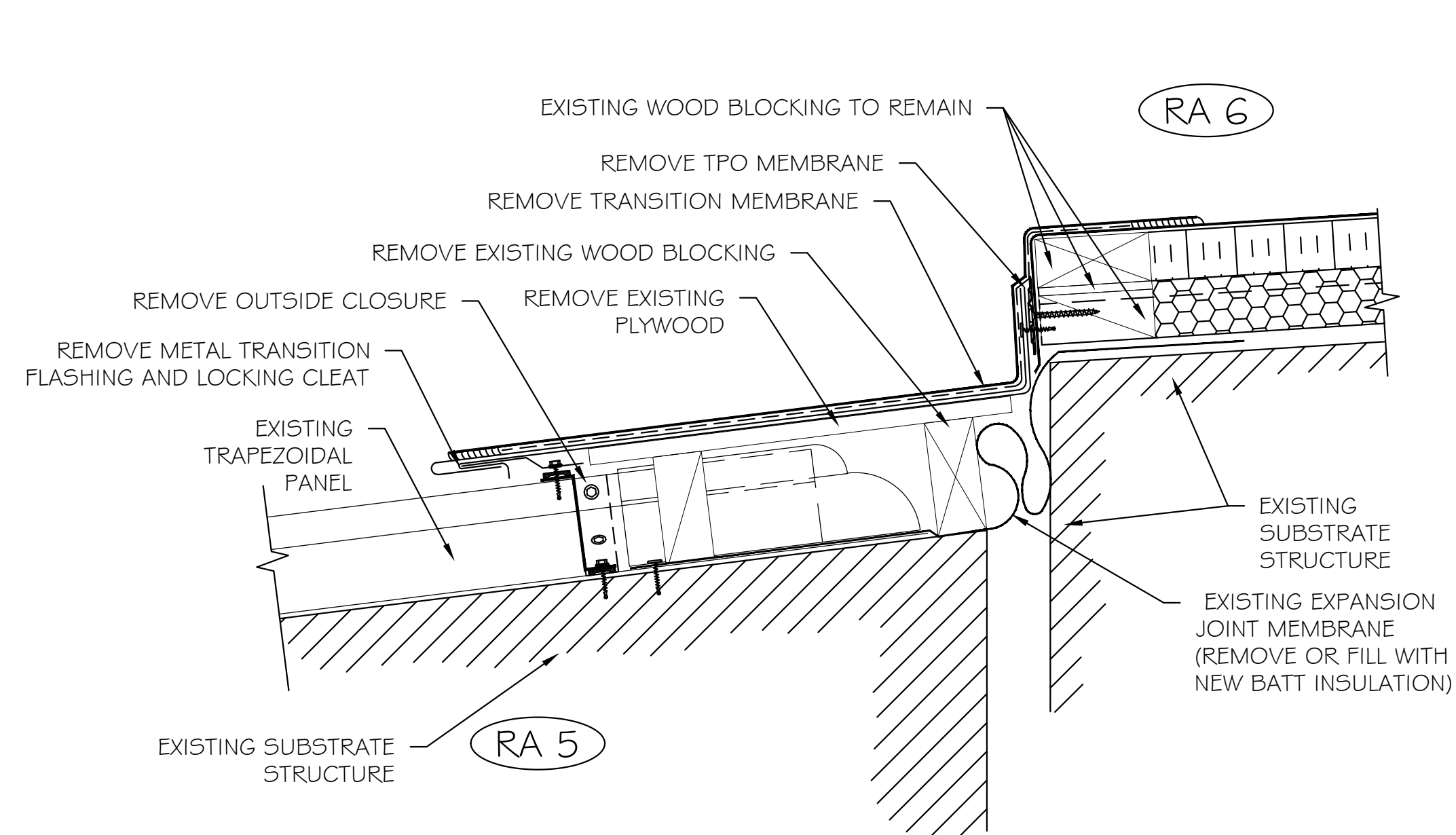
SHEET TITLE:	SCC PROJECT NO. H59-N310-IM
PROJECT DESCRIPTION:	ROOF PLAN
CLIENT NAME:	SCC-TRB ACADEMIC AREA ROOF RECOVER
	SPARTANBURG COMMUNITY COLLEGE

REVISIONS	REVISION	DATE	APPROVED

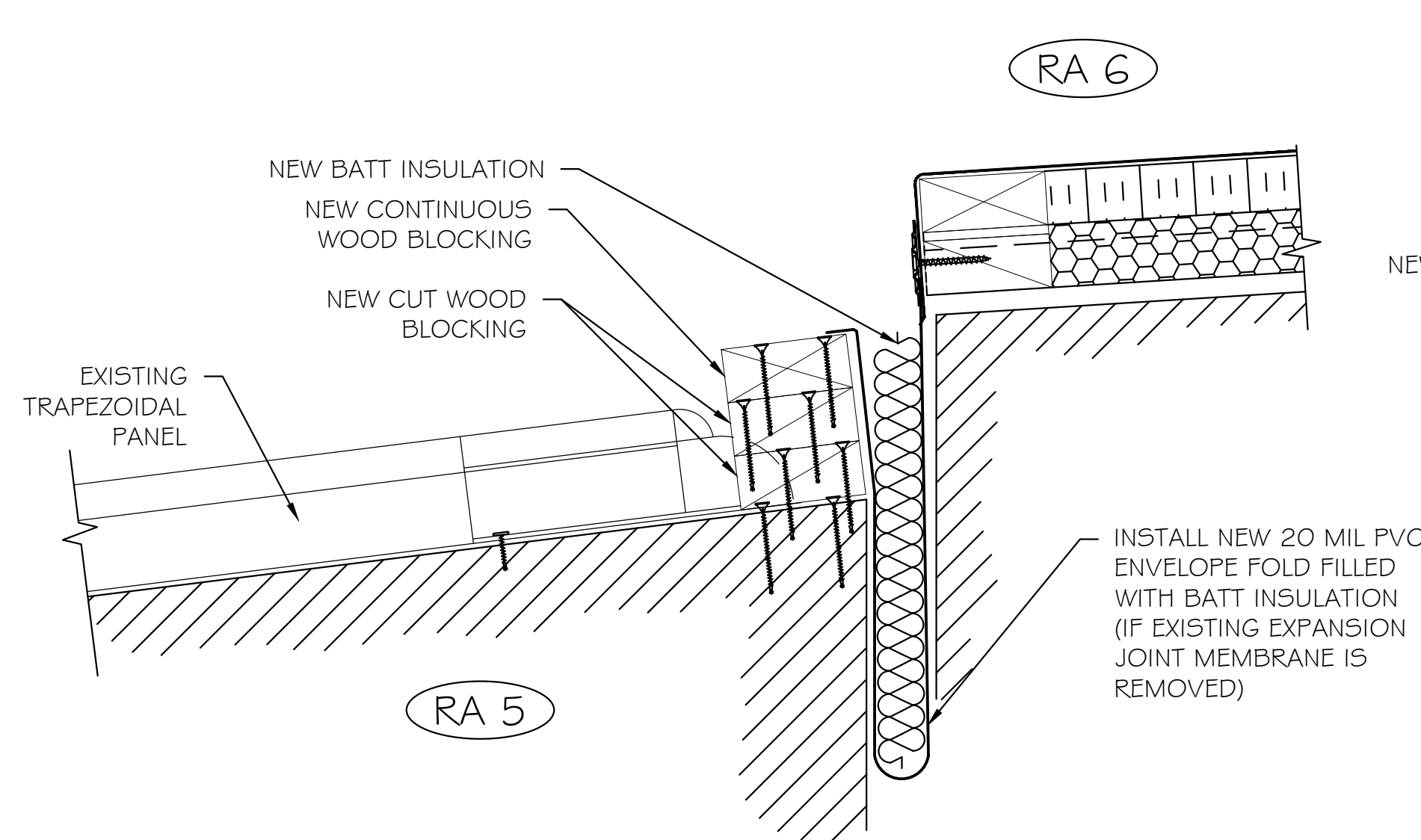


PF No. 15004.018.004
DATE: 5/5/2025
SCALE: NTS
DRAWN: JAW
CHECKED: RCP

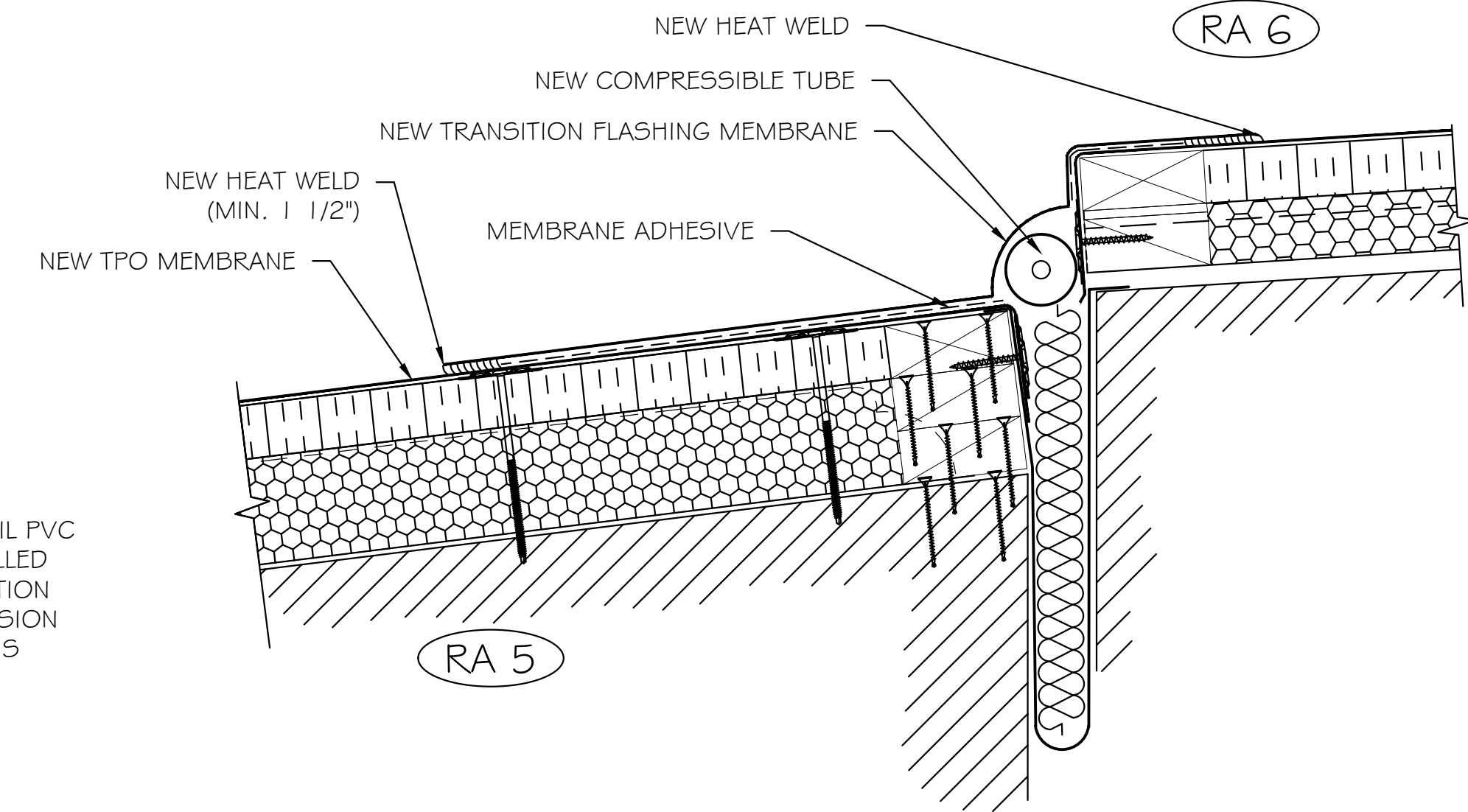
SHEET
R1



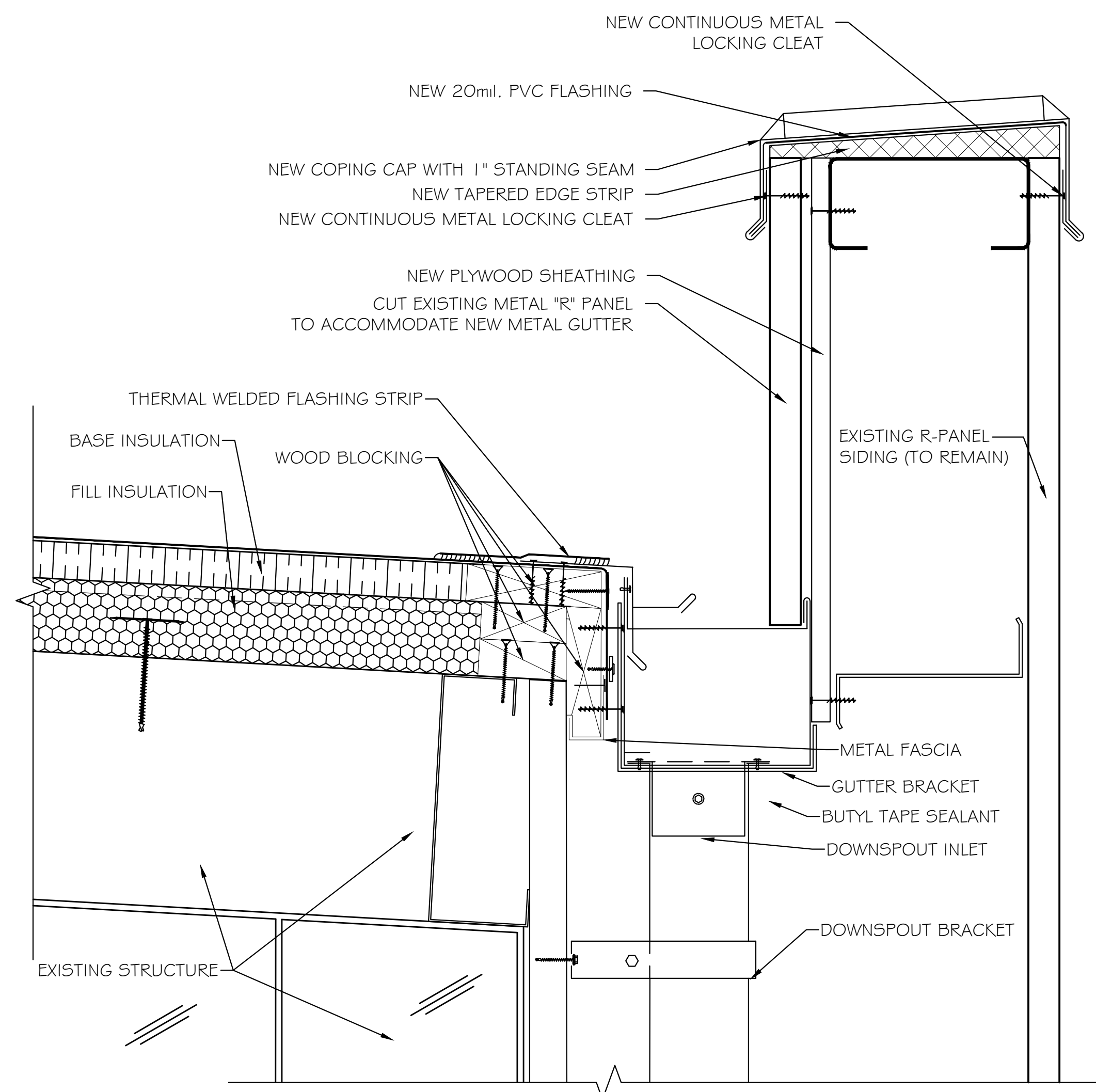
1a SLOPE TRANSITION AT RA 5 TO RA 6
EXISTING AND PARTIAL DEMOLITION



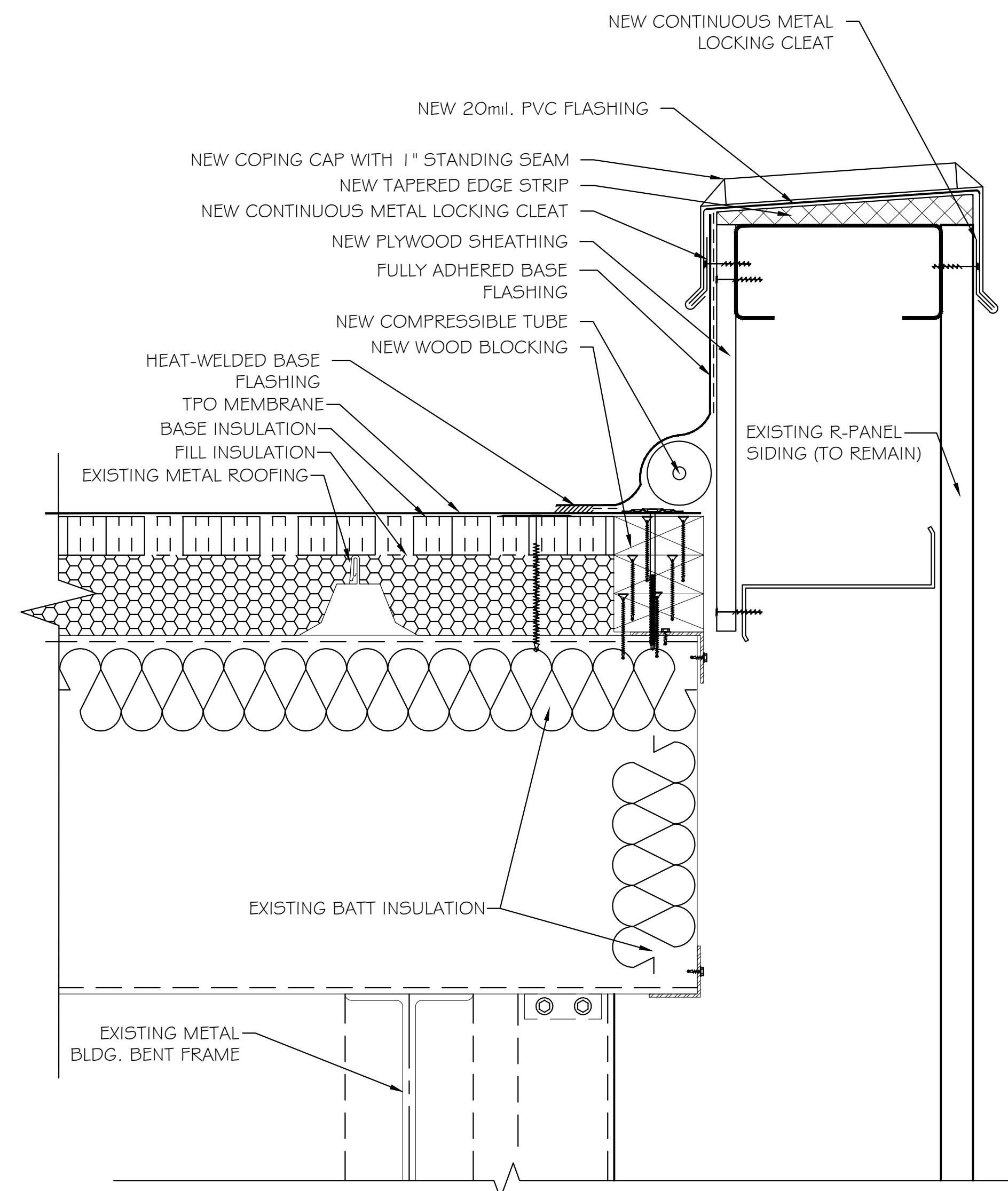
1b SLOPE TRANSITION AT RA 5 TO RA 6
AFTER DEMOLITION AND PREPARATION



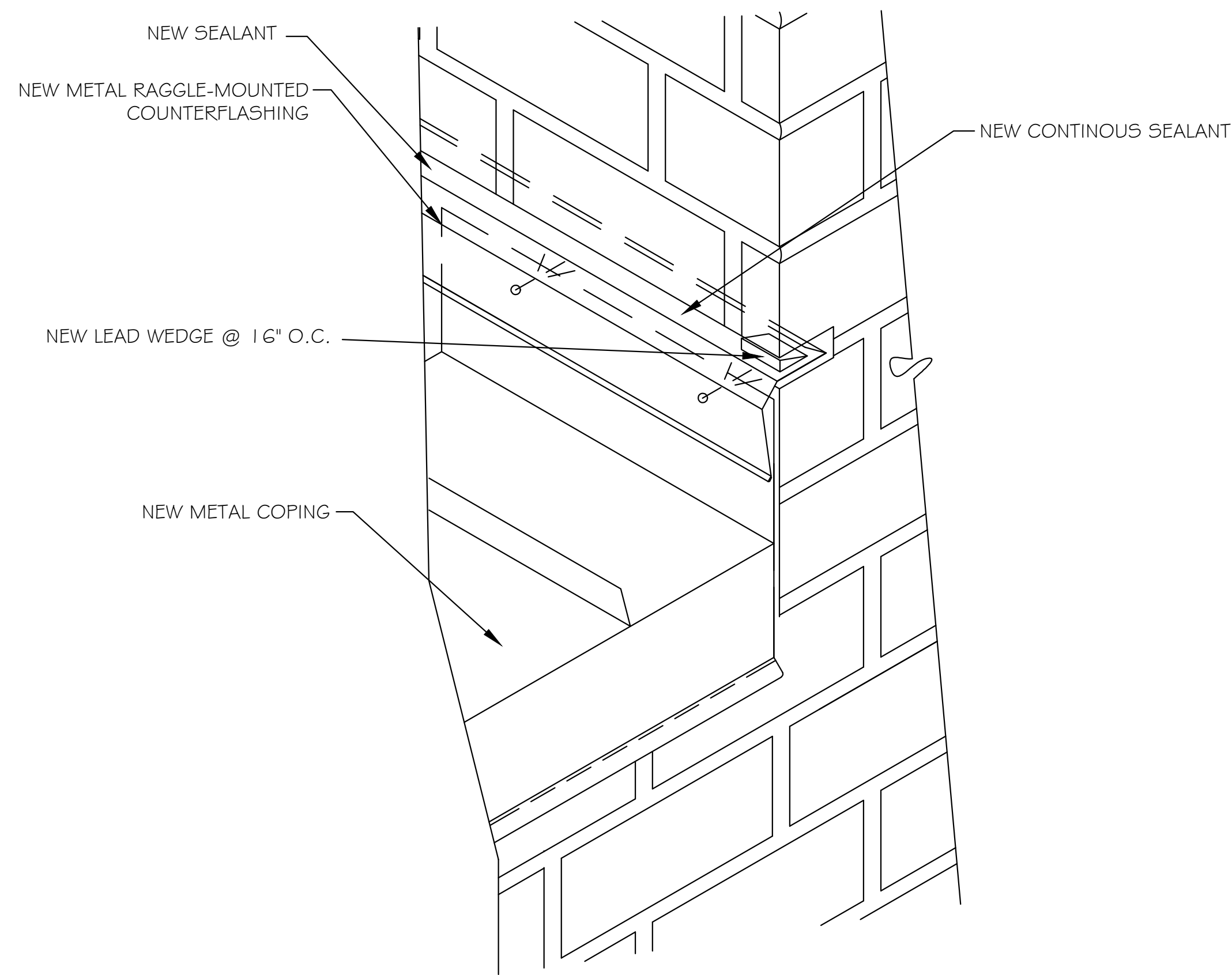
1c SLOPE TRANSITION AT RA 5 TO RA 6
COMPLETED TRANSITION FLASHING



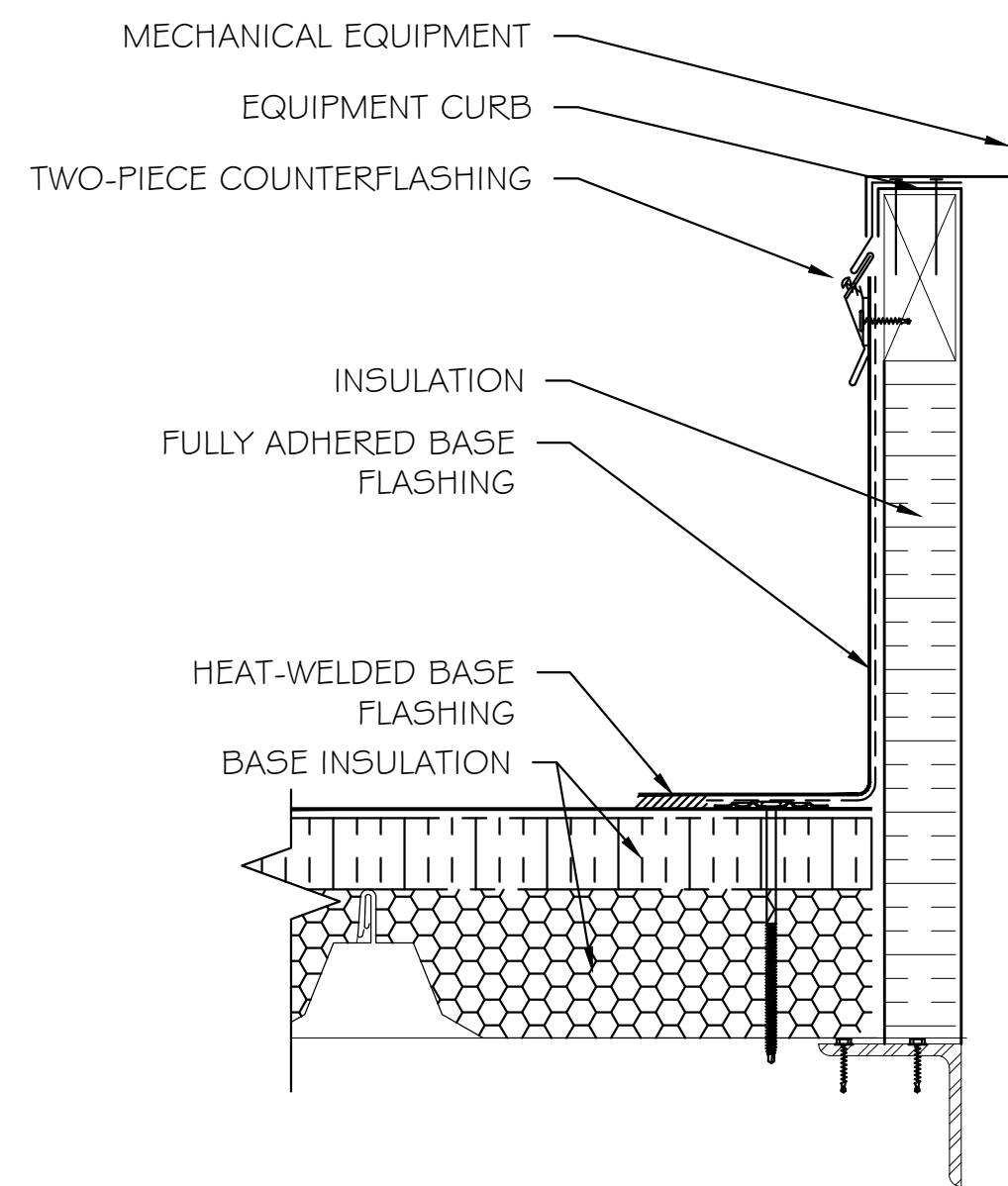
2 INTERNAL GUTTER AT PARAPET



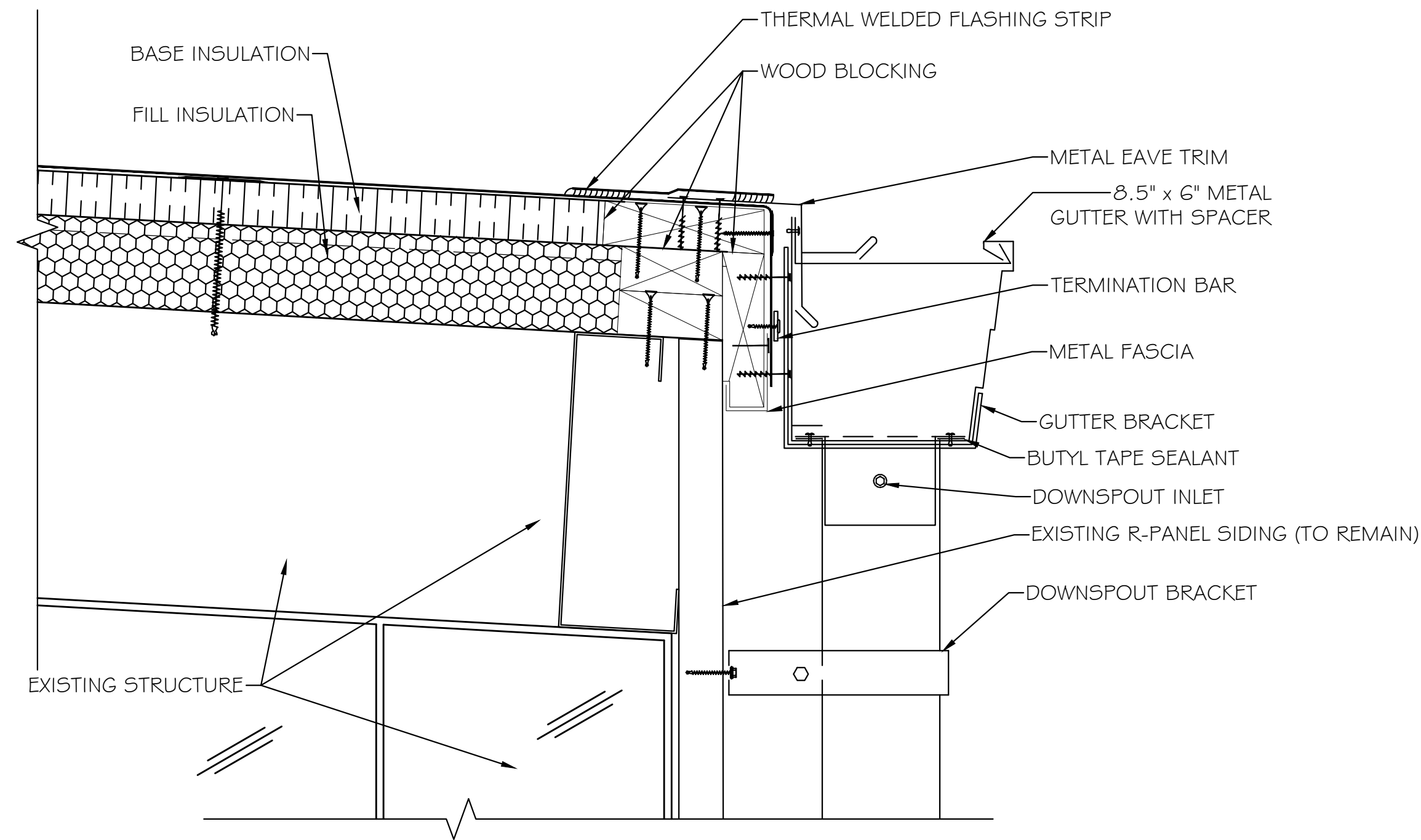
3 RAKE FLASHING AT PARAPET



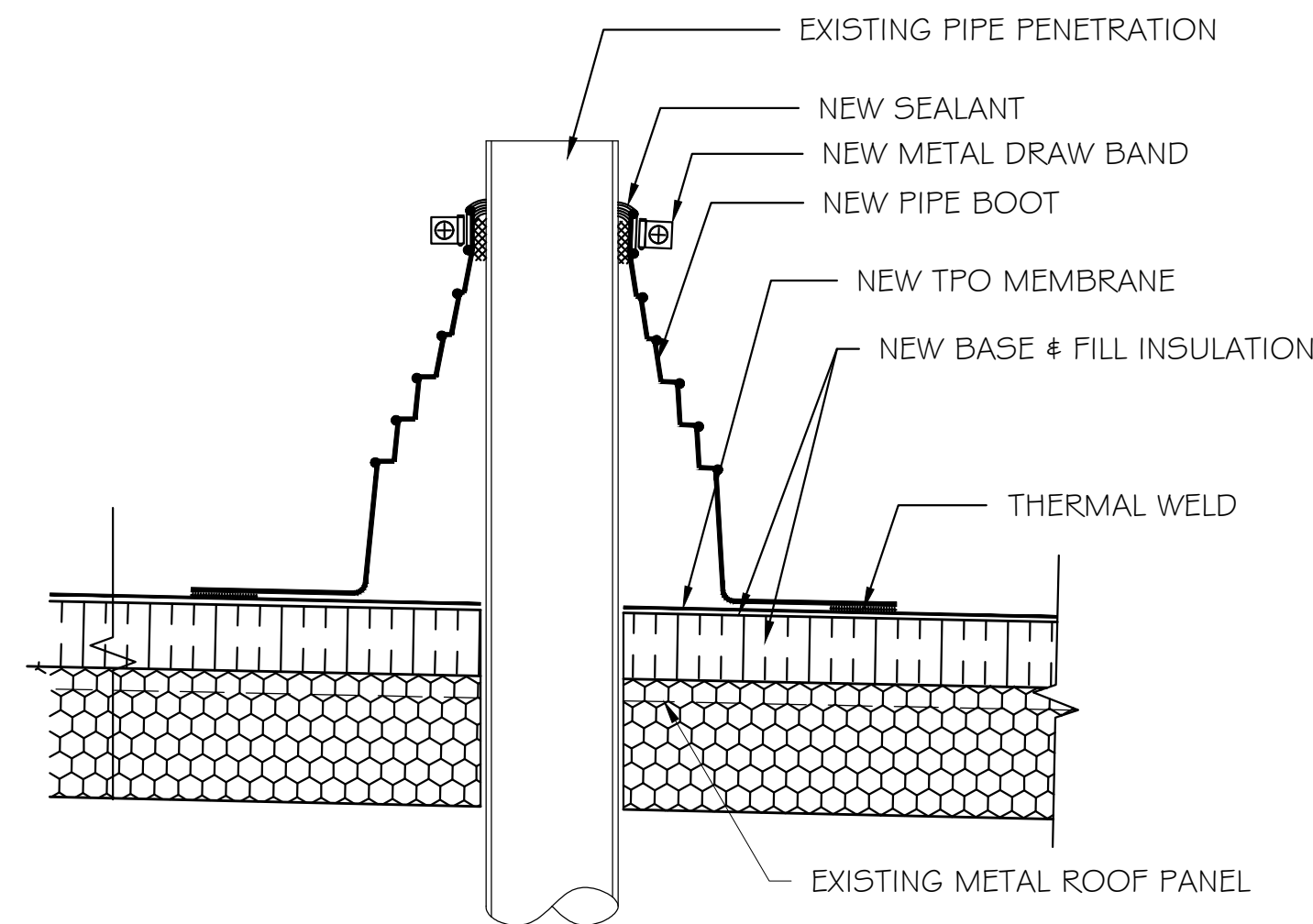
1 DETAIL AT COPING CAP END, VERTICAL WALL



3 EQUIPMENT CURB DETAIL



2 EAVE WITH GUTTER



4 TYPICAL PIPE PENETRATION