



Goodwyn Mills Cawood

Charleston Technology Center
997 Morrison Drive
Suite 102
Charleston, SC 29403

www.gmcnetwork.com

ADDENDUM NO. 1

Spartanburg Community College Gaines Building Office Renovation
GMC #ACST250006
OSE #H59-N322-JM
131 Community College Drive Spartanburg, SC 29303
August 11, 2025

The following items shall take precedence over the drawings and specifications for the above named project and shall become a part of the contract documents. Where any item called for in the specifications, or indicated on the drawings, is not supplemented hereby, the original requirements shall remain in effect. Where any original item is amended, voided, or superseded hereby, the provisions of such item not specifically amended, voided, or superseded shall remain in effect.

General:

1. Bidders are hereby advised that information from bid documents which are not received from the Architect are not legitimate and the bidder accepts full responsibility for any differences. GMC has not authorized the scanning of the documents. Bidders should be aware that the plans are copyrighted and any unlawful use is subject to legal action. Bidders are further advised that the use of partial bid documents is not recommended and bidders will be responsible for any discrepancies which might have been avoided had a full set of documents been reviewed.
2. The primary point of contact for site access is:

David W. Barber, SCEM/EL
Project Manager, Campus Operations
Spartanburg Community College
Office: (864) 592-4960
3. All questions must be submitted in writing. All responses will be made in the form of addenda to the bid documents.
4. Substitutions: Requests for substitutions must be submitted to the A/E at least 10 days prior to the bid date, which is **August 11th**. A/E shall include in an addendum the approved substitutions.
5. No addenda will be issued later than 5 business days prior to the Bid Date which will be: **August 13th**. Deadline for questions for final Addenda is **August 12th**.
6. Fire Alarm Systems - Contractor to coordinate with the following contact for Fire Alarm Systems:

Ken McEntyre
Johnson Controls
7. Drawings:
 - All architectural sheets reissued to display the correct Goodwyn Mills Cawood, LLC company stamp.
 - A1.01
 - Door R8-A size has been revised.
 - Hallway R8 flooring has been changed to CPT-1.
 - Mullion height in Storefront Section Detail / D9 has been revised.



Attachments:

1. Drawings:

- T1
- G1.03
- G1.11
- G2.00
- G2.01
- D1.01
- A1.01
- A2.01
- A8.01

END of ADDENDUM #1

1		2		3		4		5		6	
ABBREVIATIONS											
ACC	ACCESSIBLE	EA	EACH	K	THOUSAND	REQ'D	REQUIRED				
ACI	AMERICAN CONCRETE INSTITUTE	EF	EACH FACE	KIP	1 000 #	RET	RETAINING				
ADD	ACoustical CEILING TILE	EIF5	EXTERIOR INSULATION FINISH SYSTEM	KJ	KEY JOINT	REV	REVISION (S), REVISED				
ADD	ADDENDUM	EJ	EXPANSION JOINT	KSI	1 000 # PER SQ IN	RH	RIGHT HAND				
AFB	ABOVE FINISH FLOOR	ELEV	ELEVATION / ELEVATOR			RJ	RECESSED JOINT				
ALT	ALTERNATE	ELEC	ELECTRIC (ALL)	LAM	LAMINATE (D)	RM	ROOM				
ALUM	ALUMINUM	ENGR	ENGINEER	LF	LINEAR FOOT	RO	ROUGH OPENING				
APPROX	APPROXIMATE	EOP	EDGE OF PAVEMENT	L	LENGTH, ANGLE	ROW	RIGHT OF WAY				
ARCH	ARCHITECT (URAL)	EOS	EDGE OF SLAB	LAB	LABORATORY	RTU	ROOF TOP UNIT				
ADJ	ADJACENT	EQ	EQUAL	LAV	LAVATORY						
		EW	EACH WAY	LH	LEFT HAND	SC	SEALED CONCRETE				
B/B	BACK-TO-BACK	EWG	ELECTRIC WATER COOLER	LL	LIVE LOAD	SCHED	SCHEDULED				
BC	BASE OF CURB	EXH	EXHAUST	LLH	LONG LEG HORIZONTAL	SD	STORM DRAIN				
BD	BOARD	EXIST	EXISTING	LLV	LONG LEG VERTICAL	SECT	SECTION				
BLDG	BUILDING	EXP	EXPOSED	LP	LOW POINT	SF	STOREFRONT				
BLKG	BLOCKING	EXPN	EXPANSION	LT GA	LIGHT GAUGE	SIM	SIMILAR				
BM	BENCHMARK	EXT	EXTERIOR	LT	LIGHT	SPEC	SPECIFICATION (S)				
BOT	BOTTOM					SQ	SQUARE				
BRG	BEARING	FBO	FURNISHED BY OTHERS	MATL	MATERIAL	SS	SOLID SURFACE				
BSMT	BASEMENT	FD	FLOOR DRAIN	MAX	MAXIMUM	SST	STAINLESS STEEL				
BUR	BUILT-UP ROOF	FEC	FIRE EXTINGUISHER & CABINET	MC	MISCELLANEOUS CHANNEL	STD	STANDARD				
BOW	BOTTOM OF WALL	FPE	FINISH FLOOR ELEVATION	MECH	MECHANICAL	STL	STEEL				
BW	BETWEEN	FWW	FINISH FACE OF WALL	MEZZ	MEZZANINE	STOR	STORAGE				
		FHC	FIRE HOSE & CABINET	MANUF	MANUFACTURE (R)	STRUCT	STRUCTURAL				
CAB	CABINET	FIF	FACE TO FACE	MH	MANHOLE	SY	SQUARE YARD				
CB	CATCH BASIN	FL	FLOOR	MIN	MINIMUM						
C/C	CENTER TO CENTER	FLG	FLANGE	MO	MASONRY OPENING	TELE	TELEPHONE				
CD	CORE DECK	FND	FOUNDATION	MULL	MULLION	TERM	TERMINATION				
CF	CUBIC FOOT					T&G	TONGUE AND GROOVE				
CFCI	CONTRACTOR FURNISHED, CONTRACTOR INSTALLED	FO	FACE OF	NIC	NOT IN CONTRACT	TH	THICK (NE5S)				
		FOB	FACE OF BRICK	NO	NUMBER	THK	THICK (NE5S)				
CI	CAST IRON	FOC	FACE OF CONCRETE	NOM	NOMINAL	TO	TOP OF				
CIP	CAST IRON PIPE	FOD	FACE OF FINISH	NTS	NOT TO SCALE	TOC	TOP OF CURB				
CJ	CONSTRUCTION OR CONTROL JOINT	FOM	FACE OF MASONRY	Q/H	OVERHEAD	TOGB	TOP OF GRAB BAR				
CLG	CEILING	FOS	FACE OF STUD	OC	ON CENTER (S)	TOJ	TOP OF JOIST				
CLO	CLOSET	FR	FRAME (ED), (ING)	OCC	OCCUPANT (S)	TOS	TOP OF SLAB / TOP OF STEEL				
CLR	CLEAR (ANCE)	FRT	FIRE RETARDANT TREATED	OD	OUTSIDE DIAMETER	TOW	TOP OF WALL				
CMP	CORRUGATED METAL PIPE	FT	FOOT/FEET	OCFI	OWNER FURNISHED, CONTRACTOR INSTALLED	TYP	TYPICAL				
CMU	CONCRETE MASONRY UNIT	FTG	FOOTING			TZ	TERRAZZO				
CO	CLEAN OUT			OH	OPPOSITE HAND						
COL	COLUMN	GA	GAUGE	OPG	OPENING	UNO	UNLESS NOTED OTHERWISE				
CONC	CONCRETE	GALV	GALVANIZED	OPP	OPPOSITE						
CONN	CONNECTION	GB	GRAB BAR			VB	VINYL BASE				
CONST	CONSTRUCTION	GHM	GALVAN								

ROOM NAME
101

ROOM REFERENCE TAG

COLUMN LINES:
CONSECUTIVE NUMBERS ARE USED FOR COLUMN LINES RUNNING NORTH & SOUTH

CONSECUTIVE LETTERS ARE USED FOR COLUMN LINES RUNNING EAST & WEST

ELEVATION TAG:
677.52 - ELEVATION (FT)

EXTERIOR ELEVATION TAG:
ELEVATION 1 ON SHEET A101

INTERIOR ELEVATION TAG:
INTERIOR ELEVATION 3 ON SHEET A101

REVISION CLOUD AND TAG:
USED TO INDICATE SCOPE OF CURRENT REVISION

WALL TAG:
INTERIOR WALL TYPE OG (SEE PARTITION LEGEND)

DOOR TAG:
DOOR NUMBER 101 (SEE FLOOR PLANS AND DOOR SCHEDULE)

CURTAINWALL TAG:
CURTAINWALL TYPE 1 (SEE EXTERIOR ELEVATIONS AND GLAZING SCHEDULE)

STOREFRONT TAG:
STOREFRONT TYPE 1 (SEE EXTERIOR ELEVATIONS AND GLAZING SCHEDULE)

WINDOW TAG:
WINDOW TYPE 1 (SEE EXTERIOR ELEVATIONS AND GLAZING SCHEDULE)

LOUVER TAG:
LOUVER TYPE L1 (SEE LOUVER SCHEDULE)

SPECIALTY EQUIPMENT TAG:
SEE SPECIALTY EQUIPMENT SCHEDULE

PLAN KEYNOTE TAG:
KEYNOTE NUMBER
SEE PLAN KEYNOTE SCHEDULE

BUILDING SECTION TAG:
SECTION 1 ON SHEET A101

WALL SECTION TAG:
SECTION 1 ON SHEET A101

ENLARGED DETAIL TAG:
DETAIL 1 ON SHEET A101

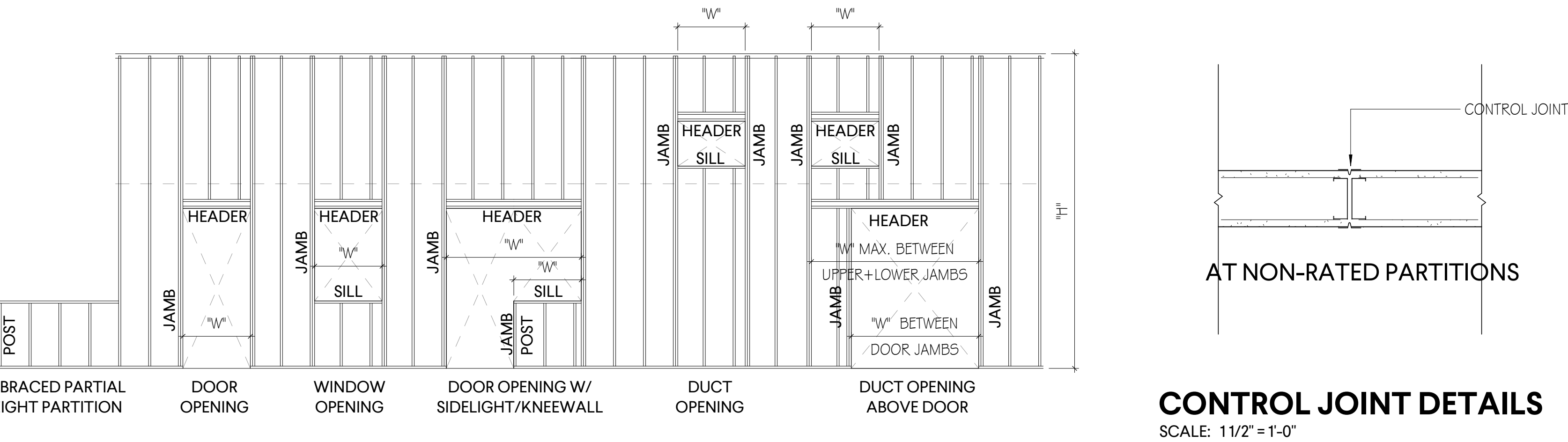
CASEWORK TAG:

PRIMARY / ACCENT WALL FINISH	PNT-1	PNT-5
BASE FINISH	BD-1	
FLOOR FINISH	LVT-1	
CASEWORK / COUNTERTOP FINISH	PL-3	SS-1

INTERIOR FINISH TAG:

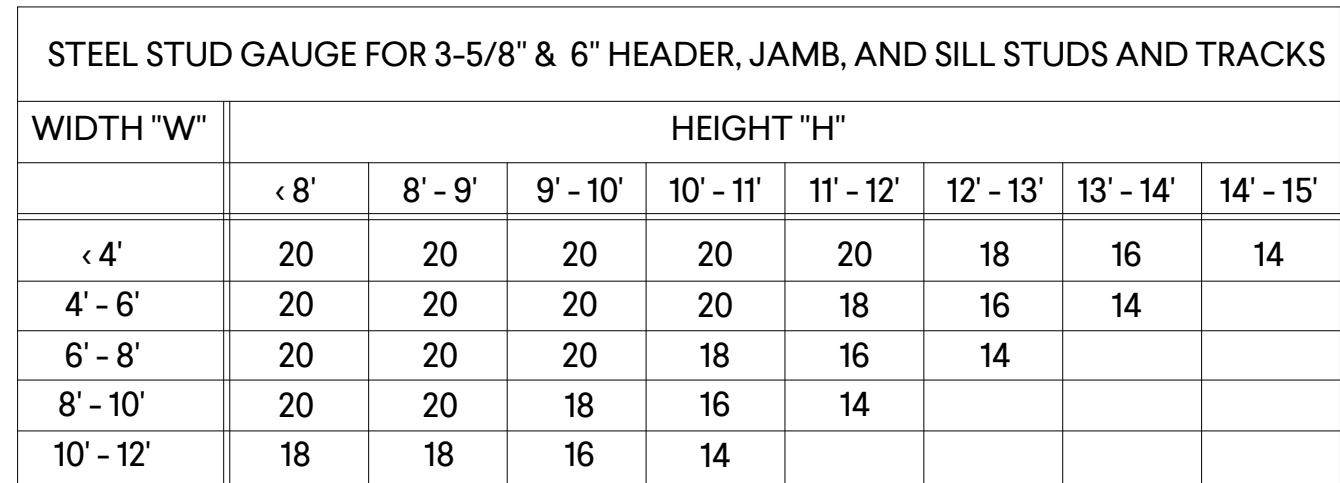
NORTH ARROW:
ARCHITECTURAL PLAN ORIENTATION

NORTH ARROW:
TRUE NORTH
CIVIL ORIENTATION



- 1.1 METAL STUDS 16" OC. DOUBLE-STUD JAMBS FULL HT. AT DOOR OPENINGS
- 1.5 CONTINUOUS TOP TRACK (0.0329" METAL THICKNESS)
- 1.7 STUD BRACING MIN. 48 IN. OC (24" OC AT WALL-HUNG CABINETS)
- 2.1 ONE LAYER 5/8 IN. GYP. BD
- 3.1 SOUND ATTENUATION BATT INSULATION, 3.5" THICK
- 3.5 ACOUSTICAL CEILING PANELS. WHERE PANELS W/ COMBINED NRC/QC RATINGS OF .70/35 (OR BETTER) ARE USED, DRAPED INSULATION MAY BE OMITTED
- 3.6 ACOUSTICAL SEALANT JOINT. PROVIDE CONT. BEAD UNDER EACH LAYER GYP BD
- 3.10 EXTEND GYP BOARD TO TOP OF TRACK TO ESTABLISH A DRAFT STOP ASSEMBLY. CONDUIT TUBINGS AND ELECTRICAL BOXES MUST SEAL CLEAR OF MET. STUDS TO ALLOW FOR APPLICATION OF UNINTERRUPTED GYPSUM MEMBRANE
- 3.11 STEEL BENT PLATE END WALL SUPPORT. SEE JAMB/END POST DETAIL ON G1.22
- 3.12 WALL CAP. SEE DETAILS ELSEWHERE ON THESE DRAWINGS

SCALE: 1 1/2" = 1'-0"



SCALE: 1 1/2" = 1'-0"

1. UL LISTED ASSEMBLIES

A. WHERE UL ASSEMBLY NUMBERS ARE REFERENCED ABOVE, PARTITIONS SHALL BE CONSTRUCTED IN STRICT COMPLIANCE WITH REQUIREMENTS SET FORTH BY THE UL FIRE RESISTANCE DIRECTORY: SEE UL ASSEMBLY DRAWINGS (BEGINNING WITH DRAWING G.1.23) FOR DETAILED UL ASSEMBLY REQUIREMENTS. NO DEVIATION SHALL BE ALLOWED WITHOUT PRIOR WRITTEN APPROVAL BY THE ARCHITECT.

1. GENERAL NOTE REGARDING THE USE OF THIS DRAWING

A. THIS DRAWING ILLUSTRATES THE FULL ARRAY OF STANDARD PARTITION TYPES USED BY GMC AND IS INTENDED TO BE PUBLISHED IN ITS ENTIRETY FOR REFERENCEHOWEVER,.....BE ADVISED THAT NOT ALL PARTITION TYPES SHOWN ON THIS DRAWING WILL BE USED IN EVERY PROJECT.

B. PARTITION TYPES USED IN THIS PROJECT ARE AS TAGGED AND/OR AS NOTED ON THE FLOOR PLANS.

C. DO NOT SPEND TIME SEARCHING FOR UNUSED PARTITION TYPES ON THE FLOOR PLANS AS YOU WILL NOT FIND THEM.

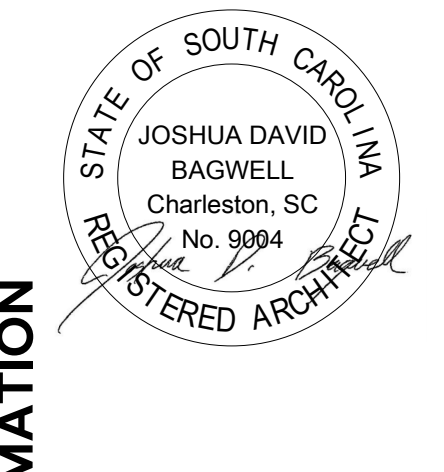
TYPE 1G	1G	1G	TYPE 1G
3 5/8" METAL STUDS		6"	6" METAL STUDS
TYPE 1S	1S	1S	TYPE 1S
4" METAL CH STUDS		2.5"	2.5" METAL CH STUDS
TYPE OM	OM	OM	TYPE OM
8" CMU		4"	4" CMU
<u>TYPICAL PARTITION</u>		<u>VARIANT PARTITION</u>	
(SHOWN THUS)		(SHOWN THUS)	
STANDARD FRAMING		VARIANT FRAMING	
3 5/8" METAL STUDS	PARTITIONS TO BE STANDARD	WHERE APPLICABLE, SIZE IS	
4" METAL CH STUDS	FRAMING EXCEPT WHERE VARIANT	SHOWN IN INCHES BELOW	
8" CMU	FRAMING SIZE IS INDICATED	PARTITION TYPE	

Goodwyn Mills Cawood, LLC
117 Welborn Street
Greenville, SC 29601
T 864.527.0460
GMCNETWORK.COM

	ISSUE	DATE
BID DOCUMENTS		06/23/2020
ADDENDUM 1		08/11/2025
1		
	DRAWN BY:	CRG
	CHECKED BY:	JDR

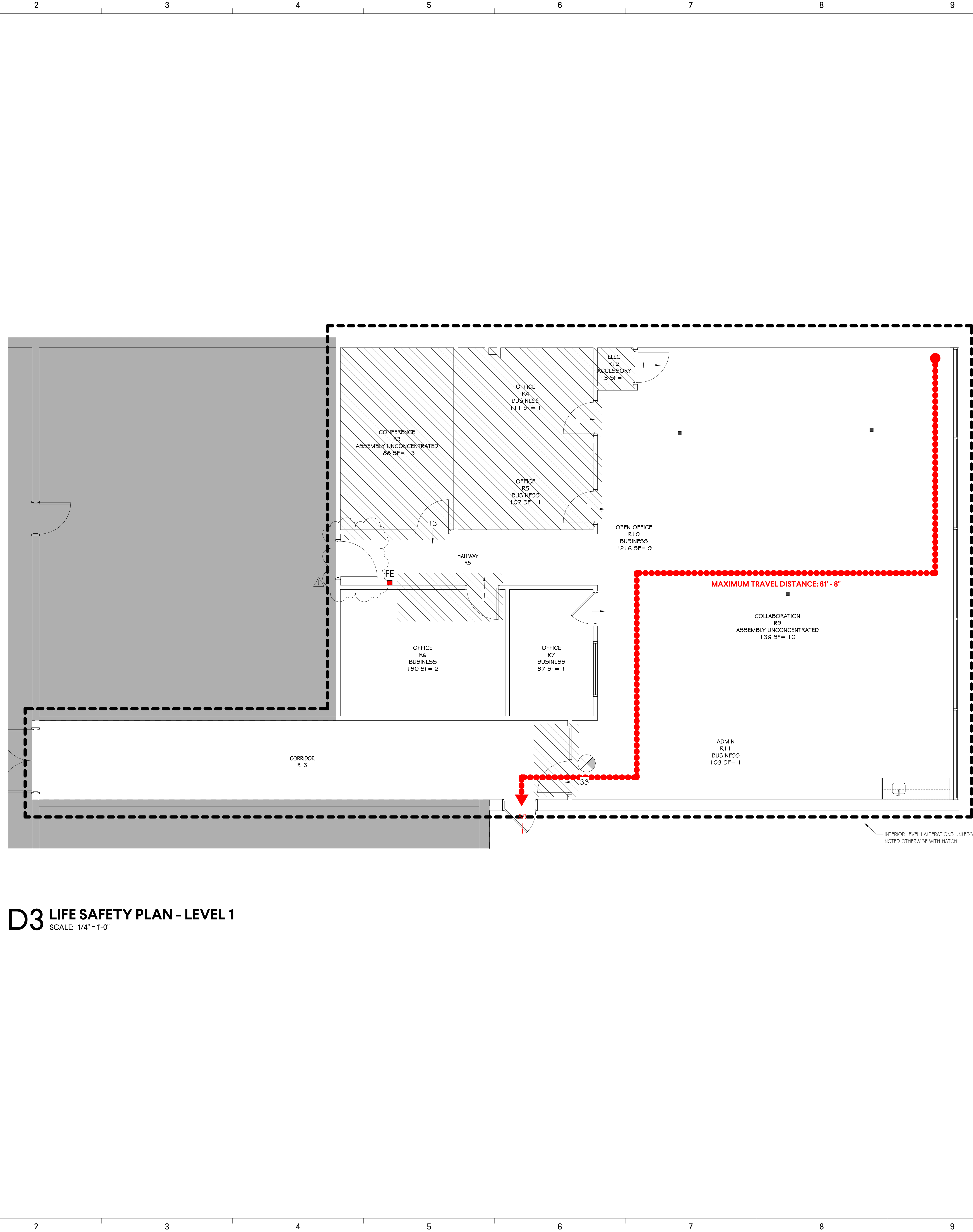
SCC - GAINES BUILDING OFFICE RENOVATION
131 COMMUNITY COLLEGE DRIVE,
SPARTANBURG, SC 29303

GMC # ACST250006



GENERAL INFORMATION


G1.03



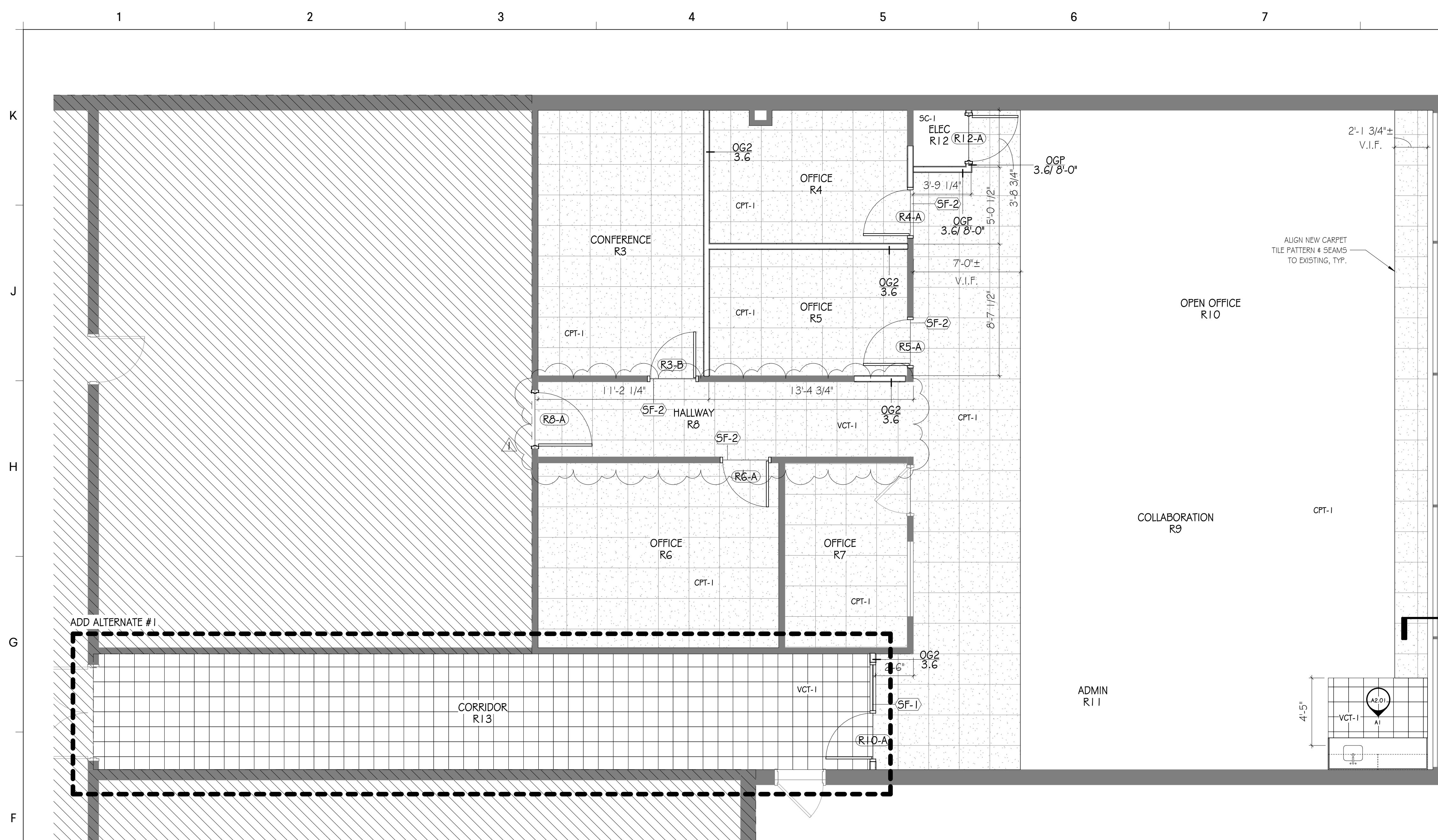
The drawing shows a large, rectangular room with a thick gray wall on the left and a thick gray wall at the bottom. A dashed line indicates a path or boundary, starting from the bottom left corner, moving right, then up, then right again, and finally down. The room is divided into two sections by a vertical line. The left section is smaller and contains a door. The right section is larger and contains a door. The drawing is a plan view of Level 1.

PLAN NORTH **TRUE NORTH**

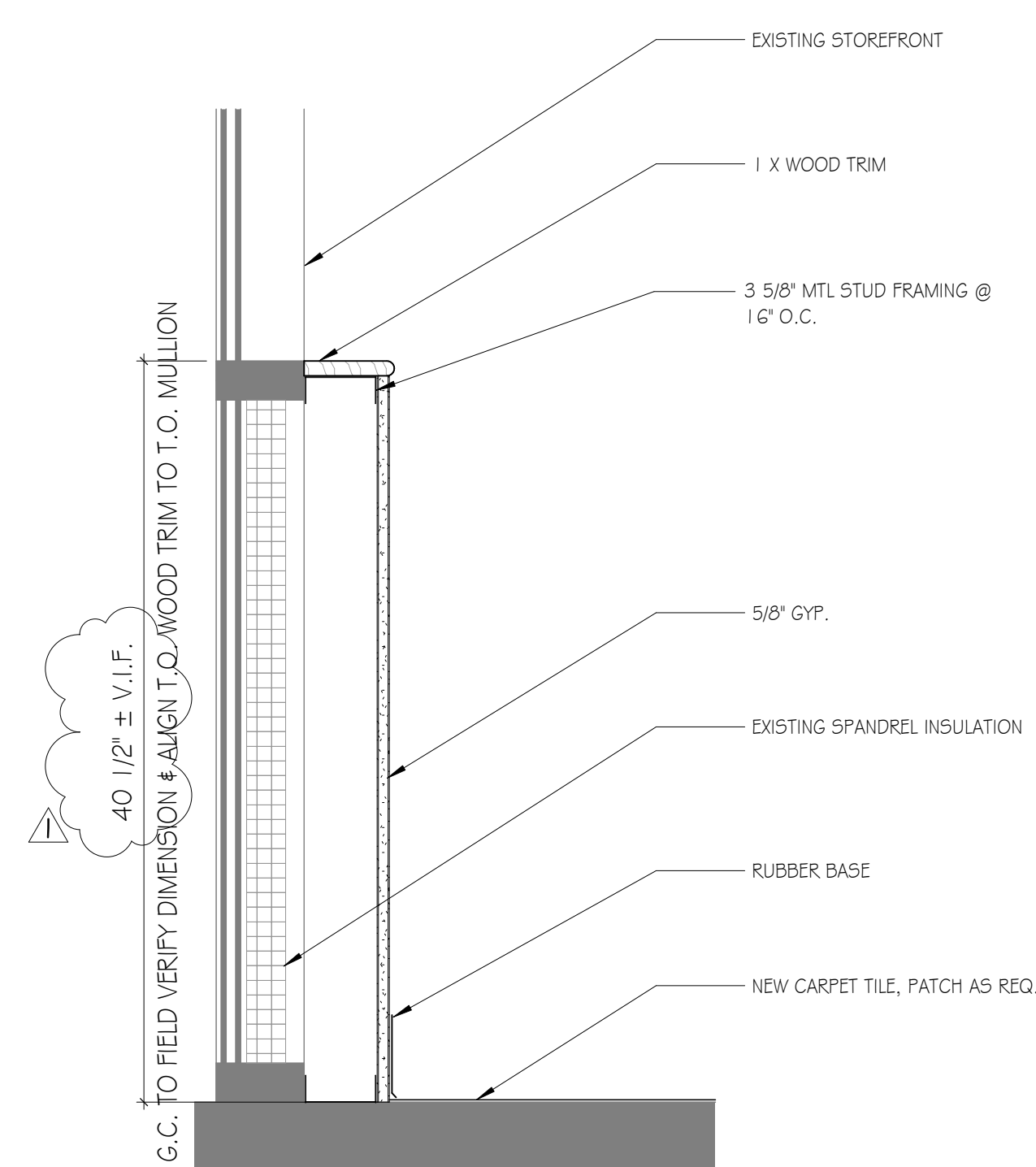
D3 **LIFE SAFETY PLAN - LEVEL 1**
SCALE: 1/4" = 1'-0"

11	12
PLAN LEGEND	
	FIRE EXTINGUISHER
	FIRE HOSE CONNECTION
	FIRE EXTINGUISHER CABINET
	FIRE ALARM MANUAL PULL STATION
	FIRE ALARM HORN
	FIRE ALARM STROBE
	FIRE ALARM HORN/STROBE
	FIRE ALARM HORN/STROBE-CEILING MT
	FIRE ALARM CONTROL PANEL
	FIRE ALARM ANNUNCIATOR PANEL
	FIRE ALARM PANEL/SUBPANEL
	MED GAS ALARM PANEL
	ILLUMINATED EXIT SIGN
	EXIT DISCHARGE W/ (EXIT AND EXIT ACCESS CLEAR EXIT WIDTH SYMBOLS SIMILAR)
	ADA ACCESSIBLE ROUTE
	DISTANCE OF TRAVEL
	WORK AREA (LEVEL 2 AREA OF RECONFIGURATION PER EBC)
	LEVEL 1 ALTERATIONS (FINISHES, EQUIPMENT, & FIXTURE REPLACEMENT / REPAIR PER EBC)

LIFE SAFETY PLAN - LEVEL 1		SCC - GAINES BUILDING OFFICE RENOVATION 131 COMMUNITY COLLEGE DRIVE, SPARTANBURG, SC 29303	
G2.01		GMC # ACST250006	
		Goodwyn Mills Carwood, LLC 117 Welborn Street Greenville, SC 29601 T 864.527.0460 GMCNETWORK.COM	
ISSUE DATE			
BID DOCUMENTS	06/23/2025		
ADDENDUM 1	08/17/2025		
DRAWN BY:	CRG		
CHECKED BY:	JDB		



DOOR SCHEDULE																
LOCATION		SIZE			DOOR			FRAME		DOOR HARDWARE					COMMENTS	
DOOR NUMBER	ROOM NAME	WIDTH	HT	THK	DOOR TYPE	MAT'L	GLASS OR LOUVER TYPE	FRAME TYPE	MAT'L	HARDWARE						
R3-B	CONFERENCE	3'-0"	7'-0"	13/4"	FG	STN	G1	SF-2	AL			CORBIN-RUSSWIN CL3851 w/ NZD TRIM				
R4-A	OFFICE	3'-0"	7'-0"	13/4"	FG	STN	G1	SF-2	AL		CORBIN-RUSSWIN CL3851 w/ NZD TRIM					
R5-A	OFFICE	3'-0"	7'-0"	13/4"	FG	STN	G1	SF-2	AL		CORBIN-RUSSWIN CL3851 w/ NZD TRIM					
R6-A	OFFICE	3'-0"	7'-0"	13/4"	FG	STN	G1	SF-2	AL		CORBIN-RUSSWIN CL3851 w/ NZD TRIM					
R8-A	HALLWAY	3'-6"	7'-0"	13/4"	F	STN		F1	HM		CORBIN-RUSSWIN L3857 w/ NZD TRIM, SURFACE-MOUNTED CLOSER				INSTALL RUBBER GASKETS AROUND DOOR HEAD, JAMB & SILL	
R10-A	OPEN OFFICE	3'-0"	7'-0"	13/4"	FG	STN	G1	SF-1	AL		REUSE EXISTING HARDWARE W/ CORBIN-RUSSWIN IC CORE, SURFACE-MOUNTED CLOSER					
R12-A	ELEC	3'-0"	7'-0"	13/4"	F	STN		F1	HM		CORBIN-RUSSWIN L3857 w/ NZD TRIM					



DOOR TYPES - WOOD + HOLLOW METAL SWING DOORS						INTERIOR HOLLOW METAL FRAME DETAILS							FRAME PROFILES								ADD ALTERNATE	
C	<p>CL EXIT DEVICE (WHERE SCHEDULED)</p> <p>W</p> <p>HT</p> <p>FLUSH</p> <p>FULL GLASS</p> <p>VARIES</p> <p>7" VAR 7"</p> <p>1/2"</p> <p>(F) (FG)</p>					<p>VARIES, SEE WALL TYPE</p> <p>3 5/8" METAL STUDS @ 16" O.C., TYP.</p> <p>SOUND ATTENUATING BATT INSULATION, TYP.</p> <p>EXISTING 5/8" GWB</p> <p>3 5/8" METAL HEADER</p> <p>HOLLOW METAL DOOR FRAME, SEE DOOR SCHEDULE</p> <p>HEAD DETAIL</p> <p>JAMB DETAIL</p> <p>VARIES, SEE WALL TYPE</p> <p>2" VARIES 2"</p> <p>1/2"</p> <p>2" TYP.</p> <p>1/2"</p> <p>3 5/8" METAL JAMB</p>							<p>NOTE: X = THROAT DIMENSION / PARTITION THICKNESS</p> <p>A B C C'</p> <p>D E F G</p> <p>H I J K</p> <p>CUSTOM @ STUD WALL W/ BRICK VENEER</p> <p>OPEN SLOT IN FACE OF JAMB (B) POINT SIDE OF FRAME (C ONLY)</p>								<p>ADD ALTERNATE #1: CORRIDOR R.I.3</p> <p>SCOPE: WALLS/DOORS/FRAMES SHALL BE PAINTED/ STAINED TO MATCH THE EXISTING BUILDING COMPONENTS (ONLY INSIDE THE CORRIDOR). THE EXISTING VCT FLOORING SHALL BE REPLACED WITH NEW VCT. THE EXISTING ACT CEILING GRID AND TILES AND LIGHT FIXTURES SHALL BE DEMOLISHED AND NEW ACT CEILING GRIDS AND TILES AND LIGHT FIXTURES SHALL BE INSTALLED. LIGHTS SHALL BE REMOVED, THERE WILL BE NO OTHER ELECTRICAL WORK OR MECHANICAL WORK REQUIRED. EXISTING CEILING VENTS SHALL REMAIN AND BE REUSED.</p>	
B	FRAME TYPES -HOLLOW METAL					STOREFRONT ELEVATIONS							GLASS SCHEDULE								KEY PLAN LEGEND 	
A	<p>STANDARD</p> <p>F1</p>					<p>SF-1</p> <p>SF-2</p>							<p>I. SEE SPECIFICATIONS FOR STOREFRONT & GLAZING DETAILS</p> <p>T CLEAR, TEMPERED</p> <p>NOTES:</p> <p>1. EXISTING CONDITIONS MAY VARY. GC TO FIELD VERIFY PRIOR TO ORDERING OR INSTALLING STOREFRONT.</p> <p>2. NOTIFY ARCHITECT OF ANY DISCREPANCIES BETWEEN DRAWINGS AND FIELD CONDITIONS PRIOR TO ORDERING STOREFRONT.</p>									

	1	2	3	4	5	6
	FINISH NOTES					
K	<p><u>FLOORS:</u></p> <ul style="list-style-type: none"> - REFER TO FLOOR FINISH PLANS FOR FLOOR PATTERN. CONTRACTOR MUST NOTIFY INTERIOR DESIGNER BEFORE INSTALLATION OF FLOORING TO REVIEW DESIGN INTENT OF FLOOR PATTERN PLAN - ALL FLOORING TRANSITIONS INCLUDING TRANSITIONS TO SIMILAR MATERIAL OR REDUCER STRIPS AND OTHER THRESHOLDS TO DISSIMILAR MATERIAL SHALL BE LOCATED AT THE CENTERLINE OF DOOR WHEN IN CLOSED POSITION. COLORS SHALL BE SELECTED DURING SUBMITTAL REVIEW. REFER TO DETAILS FOR TRANSITIONS BETWEEN FLOORING MATERIALS. CONTRACTOR TO PROVIDE TRANSITION SIZES APPROPRIATE FOR THICKNESS 	<p><u>WALLS:</u></p> <ul style="list-style-type: none"> - REFER TO FINISH PLANS & ELEVATIONS FOR LOCATION OF ACCENT PAINT COLORS - ALL HOLLOW METAL DOOR & WINDOW FRAMES TO BE PAINTED (PNT-2) UNLESS OTHERWISE NOTED - ALL ACCESS PANELS AND MISCELLANEOUS METAL (RETURN AND AIR SUPPLY GRILLES, EXPANSION JOINTS, ETC.) LOCATED ON WALL SURFACES OR CEILING SURFACES TO BE PAINTED WALL OR CEILING COLOR U.N.O. - WALL BASE TO BE INSTALLED ON ALL WALLS, MILLWORK, AND CASEWORK U.N.O. - INSTALL FINISH STRIP EQUAL TO SCHLUTER "JOLLY" AT ALL EXPOSED TILE EDGES & CORNERS 	<p><u>MISC:</u></p> <ul style="list-style-type: none"> - DO NOT PAINT DOOR LABELS AT RATED DOORS OR FRAMES. - PROVIDE BLOCKING AS REQUIRED AT ALL TELEVISION LOCATIONS - COORDINATE WITH OWNER'S EQUIPMENT - CAULK ALL DOOR FRAMES, MILLWORK, AND VIEW WINDOW FRAMES AFTER WALLCOVERING INSTALLATION IS COMPLETE. COLOR OF CAULK TO MATCH ADJACENT FINISH. - GC TO PROVIDE SPECIFIED EXPANSION JOINT COVER AT ALL EXPOSED FINISH FLOOR, CEILING, AND WALL LOCATIONS 	<p><u>RCP NOTES:</u></p> <ul style="list-style-type: none"> - INTERIOR CEILING HEIGHTS SHALL BE AS INDICATED ON THE REFLECTED CEILING PLANS. - WHERE EXIT SIGNS ARE LOCATED ABOVE DOORWAYS, CENTER ABOUT DOOR, BUT MAINTAIN MINIMUM OVERHEAD CLEARANCE. - DO NOT INSTALL CEILING TILE LESS THAN 6" IN ANY DIRECTION - WHEN POSSIBLE CENTER TILE IN ROOM. - COORDINATE WITH OWNER'S A/V CONSULTANT FOR PROJECTION SCREEN AND PROJECTOR LOCATIONS 		
J	<ul style="list-style-type: none"> - AVOID ALL FLOORING MATERIAL SLIVER CUTS LESS THAN 4" WIDE @ WALL PERIMETERS & MATERIAL TRANSITIONS. CONTACT DESIGNER IF JOBSITE CONDITIONS DIFFER. 					
	<ul style="list-style-type: none"> - INSTALL FLOORING CONTINUOUS UNDER ALL CASEWORK, MILLWORK, EQUIPMENT, & FURNITURE - ALIGN VERTICAL GROUT JOINTS IN TILE BASE WITH THOSE IN THE FLOOR TILE UNLESS NOTED OTHERWISE 	<p><u>MILLWORK / CASEWORK:</u></p> <ul style="list-style-type: none"> - INSTALL 3MM EDGE BAND ON ALL PLASTIC LAMINATE COUNTERTOPS AND CABINETS. - GROMMET LOCATIONS TO BE COORDINATED WITH OWNER 				
H	<p><u>RENOVATION:</u> THESE SHOULD BE IN FINISH LEGEND</p> <ul style="list-style-type: none"> - AT EXISTING SEALED CONCRETE FLOOR LOCATIONS NOTED AS SC ON FINISH PLANS - GC TO CLEAN, GRIND & RE-SEAL AS SPECIFIED. - AREAS WITH CARPET TILE TO BE PATCHED WHERE FLOOR BOXES ARE BEING REMOVED. 	<ul style="list-style-type: none"> - FIELD VERIFY ALL DIMENSIONS FOR CASEWORK & MILLWORK PRIOR TO FABRICATION & INSTALLATION - ALL EXPOSED ENDS AND EXPOSED INTERIORS OF CASEWORK/ MILLWORK TO RECEIVE MATCHING LAMINATES - ALL CABINETS TO BE LOCKABLE 	<ul style="list-style-type: none"> - MARKER BOARDS HEIGHTS TO BE (3'-0" A.F.F.) TO THE BOTTOM OF WRITING SURFACE. GC TO COORDINATE WALL BLOCKING AS REQD. - ALL PARTIES RESPONSIBLE FOR DELIVERING FINISHES TO THE SITE SHALL CHECK AVAILABILITY OF QUANTITIES AND DELIVERY DATES UPON NOTICE TO PROCEED. NO CONSIDERATION WILL BE GIVEN FOR FAILURE TO COMPLY WITH THIS REQUIREMENT. 			

ROOM FINISH SCHEDULE								
G	ROOM #	ROOM NAME	FLOOR	BASE	WALL	MILLWORK/CASEWORK		COMMENTS
						CABINET	COUNTERTOP	
	R3	CONFERENCE	CPT-1	RB-1	PNT-1			
	R4	OFFICE	CPT-1	RB-1	PNT-1			
	R5	OFFICE	CPT-1	RB-1	PNT-1			
	R6	OFFICE	CPT-1	RB-1	PNT-1			
	R7	OFFICE	CPT-1	RB-1	PNT-1			
	R8	HALLWAY	CPT-1	RB-1	PNT-1			
	R9	COLLABORATION	CPT-1	RB-1	PNT-1			
	R10	OPEN OFFICE	CPT-1/ VCT-1	RB-1	PNT-1	PL-1	SS-1	
	R11	ADMIN	CPT-1	RB-1	PNT-1			
	R12	ELEC	CPT-1	RB-1	PNT-1			
F	R13	CORRIDOR	VCT-1	RB-1	PNT-1			PAINT WALLS AND DOOR FRAMES AND PAINT/ STAIN EXISTING DOORS ON HALL SIDE ONLY

CASEWORK SCHEDULE		
NOTE: CABINET DESIGN SERIES (CDS) NUMBERS BASED ON AIA STANDARDS EDITION 2		
CDS #	CASEWORK TYPE	DESCRIPTION
153	BASE CAB	FALSE DRWR / REMOVABLE TOE FOR ADA
222	BASE CAB	DBL DOORS / DBL DRWRS
302	WALL CAB	DBL DOORS

FINISH LEGEND

FLOOR			BASE			MISC		
NUMBER	TYPE	DETAIL DESCRIPTION	NUMBER	TYPE	DETAIL DESCRIPTION	NUMBER	TYPE	DETAIL DESCRIPTION
CPT-1	CARPET	MANUFACTURER: MILLIKEN & COMPANY COLLECTION: SOUTHERN ANALOG DESIGN NAME: VOLTAGE COLOR: VT31 G BALANCE SIZE: INSTALLATION: LOCATION:	RB-#	RUBBER BASE	MANUFACTURER: ROPPE STYLE NAME: 700 SERIES COLOR: 178 PEWTER SIZE: 4"	PL-#	PLASTIC LAMINATE [TYP. FACE]	MANUFACTURER: WILSONART STYLE NAME: WHITE OAT PB HONEY COLOR: 6283K-05 FINISH: TIMBERGRAIN *SPECIFIED BY OWNER
VCT-1	VINYL COMPOSITION TILE	MANUFACTURER: ARMSTRONG STYLE NAME: STERLING ITEM NUMBER: 51904 SIZE: 12' x 12' INSTALLATION: LOCATION:		WALL			SS-1	SOLID SURFACE
SC-1	SEALED CONCRETE		NUMBER	TYPE	DETAIL DESCRIPTION			
			PNT-1	[GENERAL/MAIN PAINT]	MANUFACTURER: SHERWIN WILLIAMS COLOR: CRYSTAL BALL #87BOW TYPE: LATEX LOCATION: ALL WALLS			
			PNT-2	[TRIM/ FRAME PAINT]	MANUFACTURER: SHERWIN WILLIAMS COLOR: STERLING COIN #87B2 TYPE: LATEX LOCATION: TRIM/ FRAMES			
CEILING								
NUMBER	TYPE	DETAIL DESCRIPTION						
ACT-1	ACOUSTIC CEILING TILE	MANUFACTURER: USG STYLE NAME: RADAR 2210 COLOR: WHITE SIZE: 24x24 GRID: DOWN® BRAND DX®/DXL™ 15/16" LOCATION: ALL NEW WORK						

[illegible]